

Maria, Mater gratiae (Op. 47, No. 2)

SA or TB Duet with organ or piano

Gabriel Fauré
(1845-1924)

Andante (♩ = 50)

Soprano or Tenor

Alto or Bass

Organ or Piano

Andante

p

5

Dolce

Ma - ri - a, Ma - ter___ gra - ti-ae

Dul - cis___

Dolce

Ma - ri - a, Ma - ter___ gra - ti-ae

Dul - cis___

Sempre

10

p

pa - rens cle - men - ti-ae

p

Ma - ri - a, Ma - ri - a,

pa - rens cle - men - ti-ae

Ma - ter — gra - ti - ae, Dul - cis, — Dul - cis pa - rens cle - men - ti -

mf *p*

p *mf* *p*

Ma - ter — gra - ti - ae, Dul - cis pa - rens cle - men - ti -

ae, — Tu nos ab hos - te pro - te - ge,

p

ae, — *Dolce*

Tu nos ab hos - te pro - te - ge, Et mor - tis

p *pp*

Tu nos ab hos - te pro - te - ge, Et mor - tis

pp

30

Poco rit.

f **A Tempo**

ho - ra, Sus - ci - pe Je - su, Je - su ti - bi sit

ho - ra, Sus - ci - pe Je - su, Je - su ti - bi sit

Cresc. *mf*

35

f

glo - ri - a Qui - na - tus - es de Vir - gi - ne

glo - ri - a Qui - na - tus - es de Vir - gi - ne

f

40

p

Cresc.

Cum pa - tre, cum pa - tre et al - mo Spi - ri - tu,

Cum - pa - tre, cum - pa - tre et al - mo Spi - ri - tu,

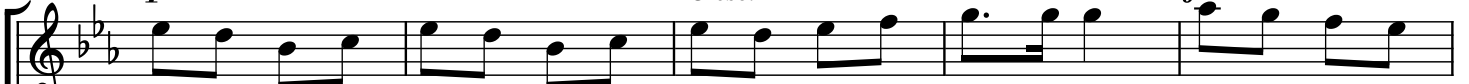
p *Cresc.*

45

p

Cresc.

f



In sem - pi - ter - nam, sem - pi - ter - nam sae - cu - la Sem - pi -

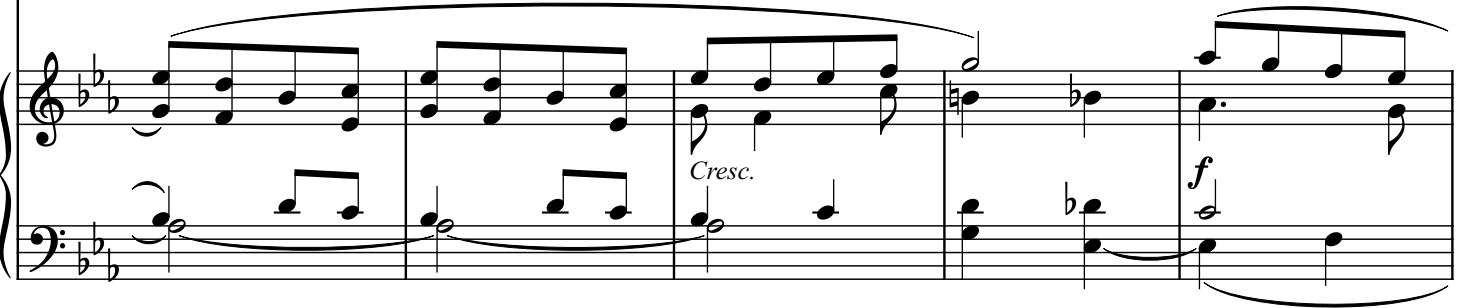
p

Cresc.

f



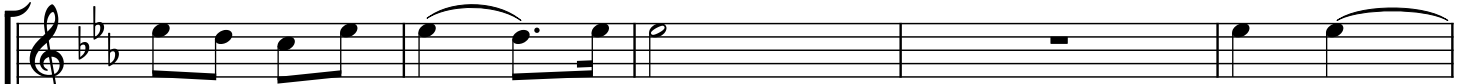
In sem - pi - ter - nam, sem - pi - ter - nam sae - cu - la Sem - pi -



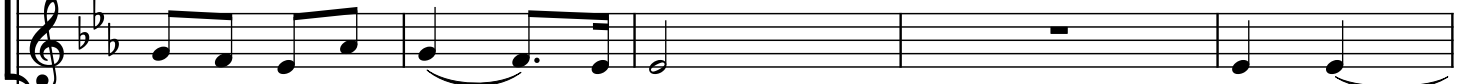
Cresc.

f

50



ter - nam sae - cu - la. A - men,



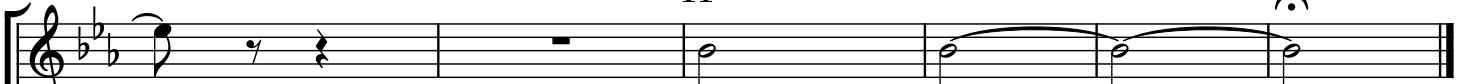
ter - nam sae - cu - la. A - men,



p

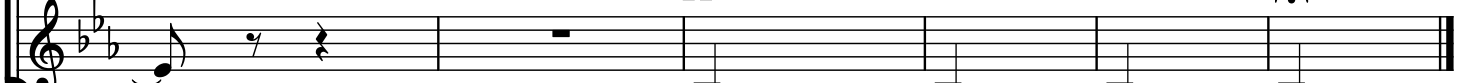
55

pp

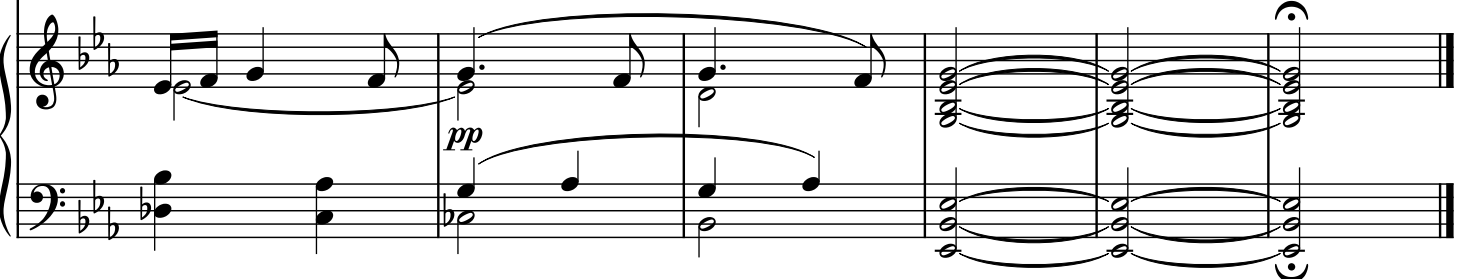


A - men.

pp



A - men.



pp