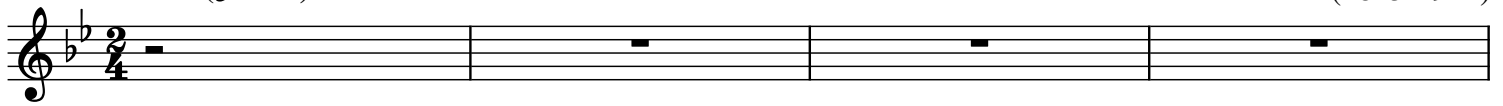


Maria, Mater gratiae (Op. 47, No. 2)

SA or TB Duet with organ or piano

Gabriel Fauré
(1845-1924)

1 *Andante* (♩ = 50)

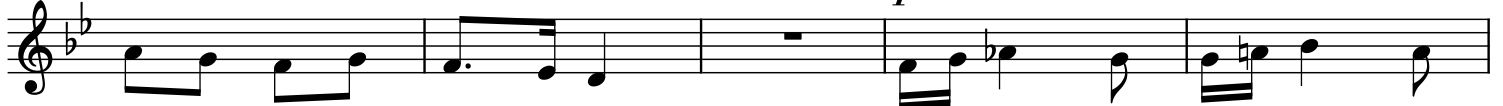


5 *Dolce*



Ma - ri - a, Ma - ter gra - ti - ae Dul - cis

10



pa - rens cle - men - ti - ae *p* Ma - ri - a, Ma - ri - a,

15



Ma - ter gra - ti - ae, *mf* Dul - cis, *p* Dul - cis pa - rens cle - men - ti -

20



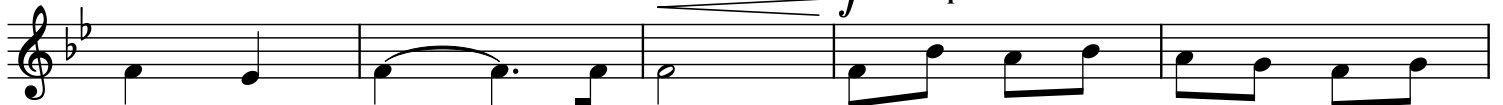
ae, *p* Tu nos ab hos - te pro - te - ge,

25



Tu nos ab hos - te pro - te - ge, *pp* Et mor - tis

30



ho - ra, *Poco rit.* *f* A Tempo Sus - ci - pe Je - su, Je - su ti - bi sit

35



glo - ri - a *f* Qui na - tus es de Vir - gi - ne

40



Cum pa - tre, *p* *Cresc.* cum pa - tre et al - mo Spi - ri - tu,

45



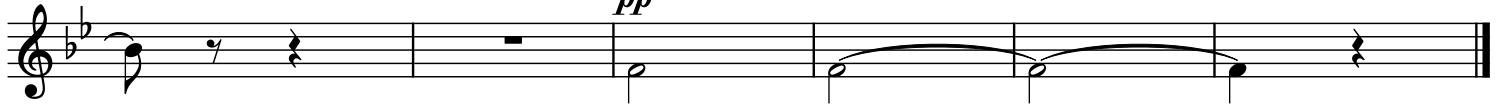
In sem - pi - ter - nam, *p* *Cresc.* sem - pi - ter - nam sae - cu - la *f* Sem - pi -

50



ter - nam sae - cu - la. A - men,

55



pp A - men.