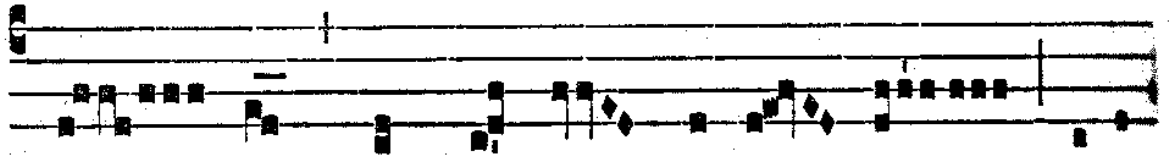


Intr.

1.

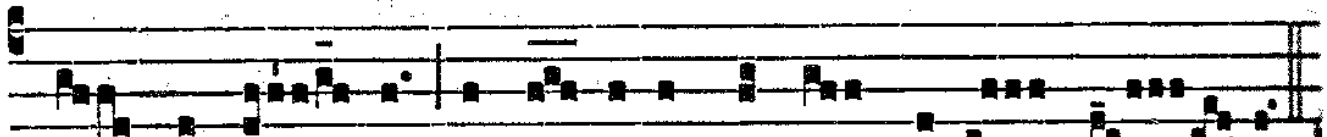
J



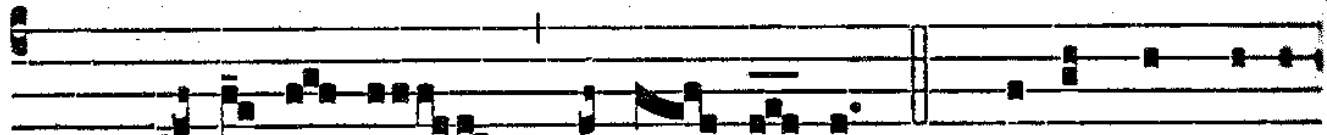
U- stus * ut pálma flo-ré- bit : sic-ut



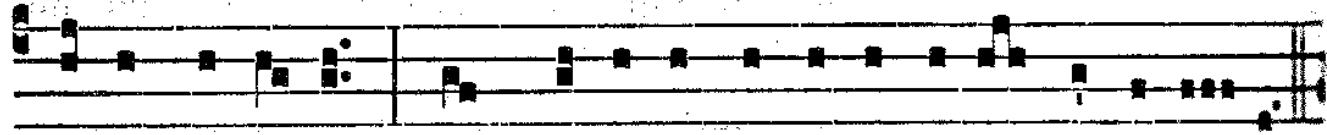
cédrus Líbani multipli-cá- bi- tur : plantá- tus in dó-



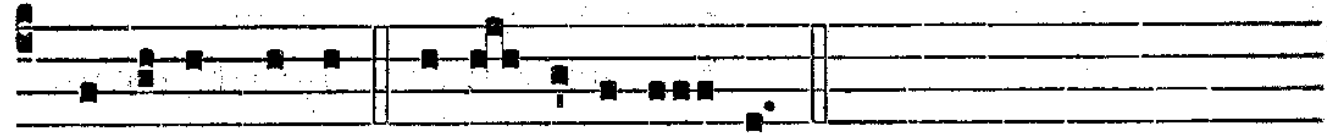
mo Dómi- ni, in á- tri- is dómus Dé- i nó- stri.



T. P. Alle-lú- ia, alle- lú- ia. *Ps.* Bónum est confi-



té-ri Dómi-no : * et psálle-re nómi-ni tú-o, Altíssi-me.



Gló-ri-a Pátri. E u o u a e.