

CruX fidélis

HYMN.

I

C

Rux fi-dé-lis, inter omnes Arbor u-na nó-bi-lis: Nulla sil-va

ta-lem pro-fert, Fronde, flo-re, gé-rmi-ne: * Dulce lignum, dulces cla-

vos, Dulce pondus sústi-net.

HYMN.

I

P

Ange, lingua, glo-ri-ó-si Láure-am certámi-nis, Et su-per Cru-

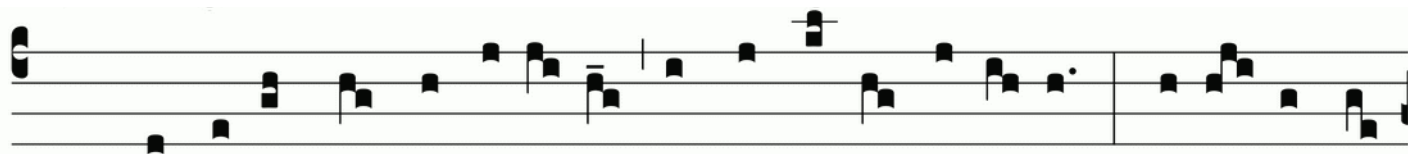
cis trophæ-o Dic tri-úm-phum nó-bi-lem: Quá-li-ter Red-émptor or-

bis Immo-lá-tus ví-ce-rit. CruX fidélis.

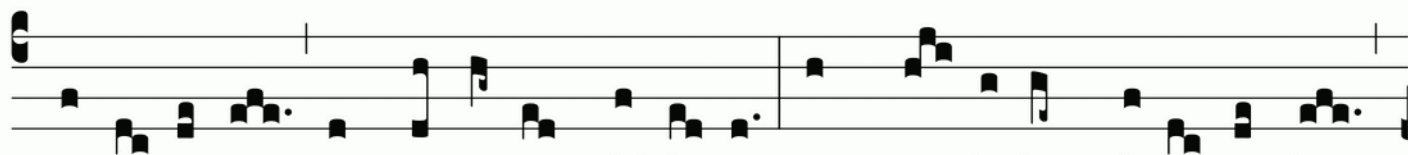
†. 2. De pa-réntis pro-toplás-ti Fraude Fac-

tor cóndo-lens, Quando pomi no-xi-á-lis In ne-cem morsu ru-it:

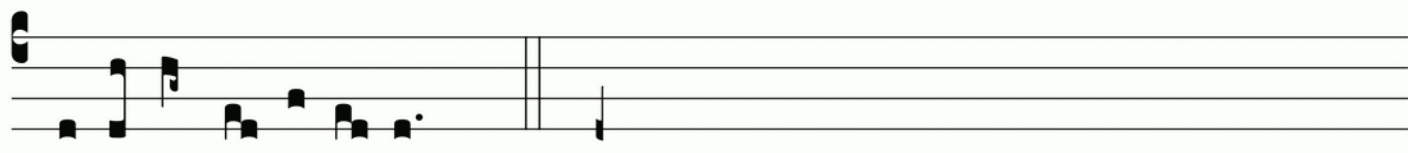
Ipsé lignum tunc no-tá-vit, Damna ligni ut sólve-ret. * Dulce



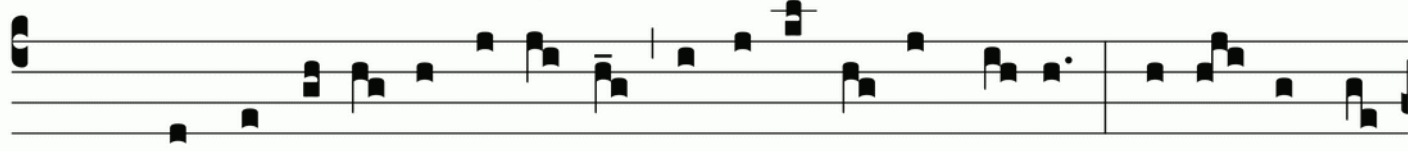
¶.3. Hoc opus nostræ sa-lú-tis Ordo de-po-pósce-rat: Multi- fórmis



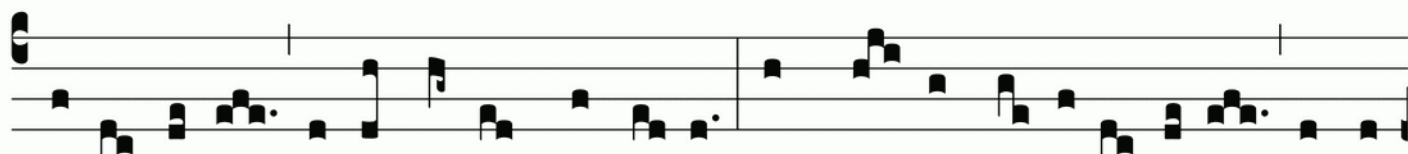
pro-di-tó-ris Ars ut artem fá-l-le-ret: Et me- dé-lam ferret inde,



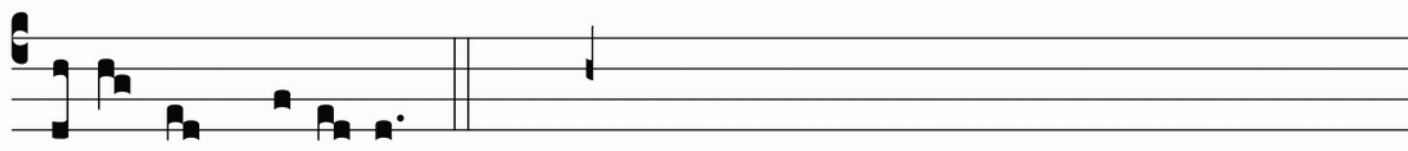
Hostis unde láe-se-rat. Crux fidelis.



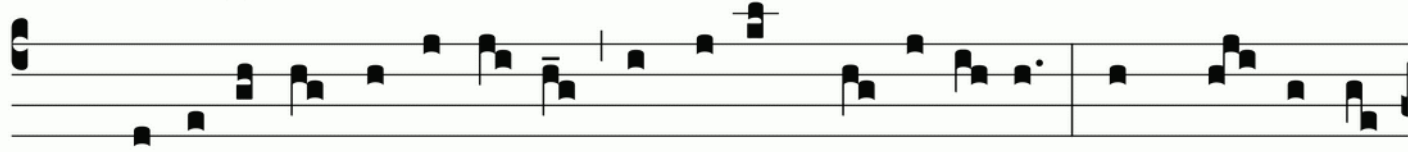
¶.4. Quando ve-nit ergo sa-cri Ple-ni-tú-do témpo-ris, Missus est ab



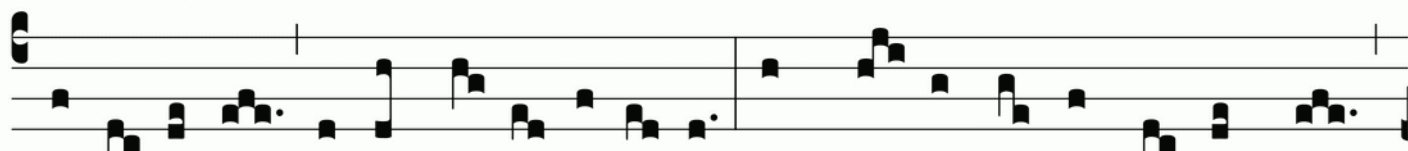
arce Patris Na-tus, orbis Cón-di-tor, Atque ventre virgi-ná-li Carne



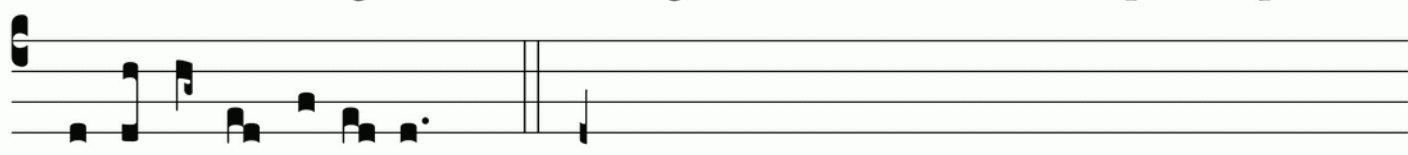
amíc-tus pró-di- it. *Dulce



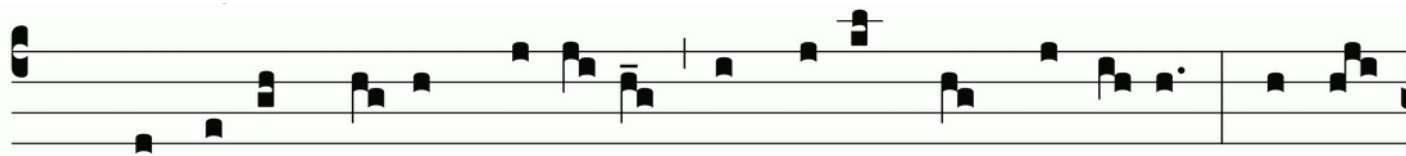
¶.5. Va-git infans inter arcta Cón-di-tus præ-sé-pi- a: Membra pannis



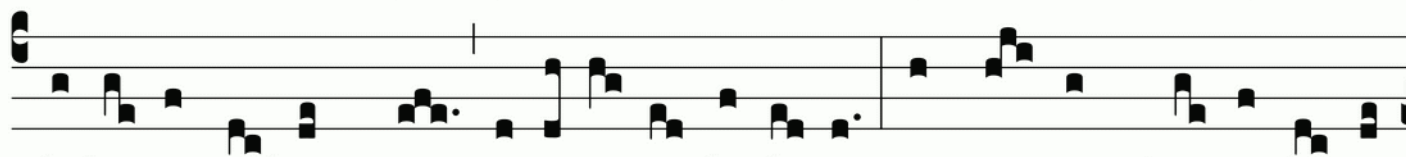
invo-lú-ta Virgo Ma-ter ál-li-gat: Et De- i ma-nus pe-désque



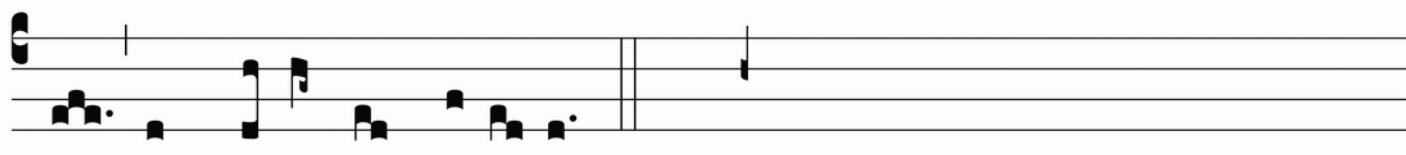
Stricta cingit fá-sci- a. Crux fidelis.



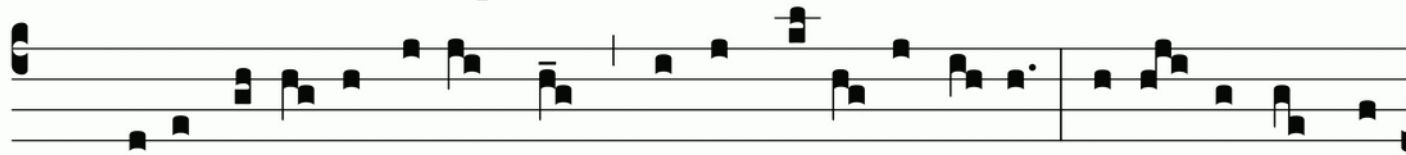
¶. 6. Lustra sex qui jam per-é- git, Tempus implens córpo-ris, Sponte



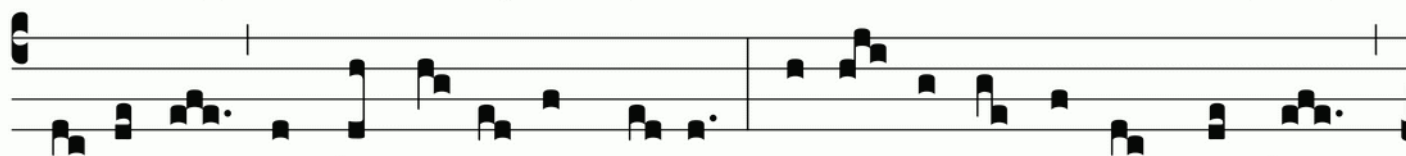
lí-be-ra Red-émptor Passi-ó-ni dé-di-tus, Agnus in Cru-cis le-vá-



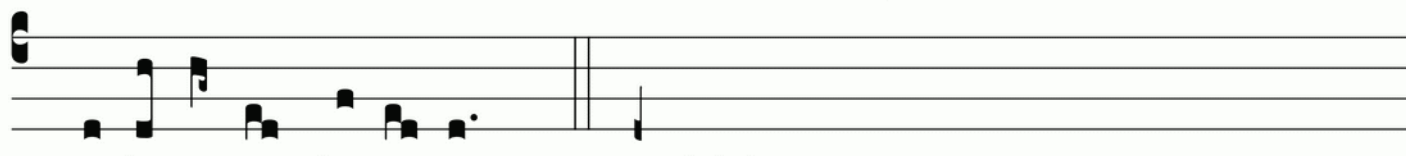
tur Immo-lándus stí-pi-te. *Dulce



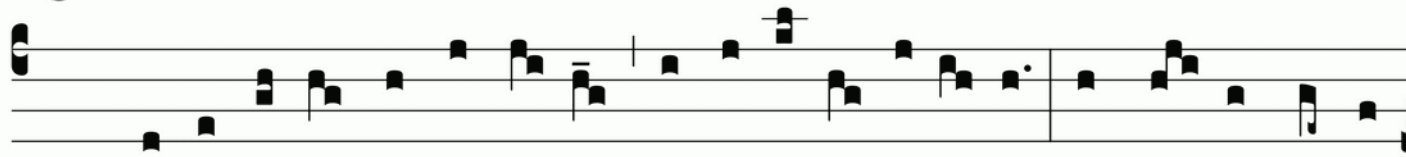
¶. 7. Felle po-tus ecce languet: Spi-na, cla-vi lánce- a, Mi-te corpus per-



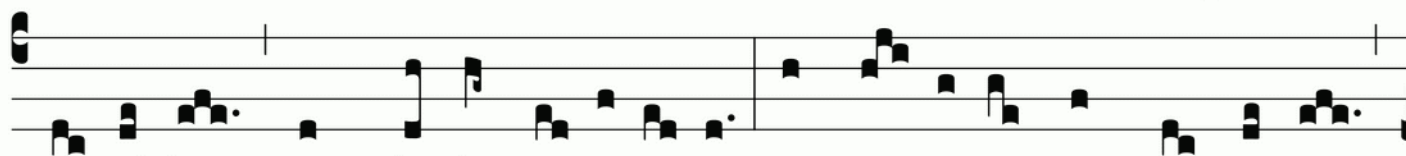
fo-rá-runt, Unda ma-nat et cru- or: Terra, pontus, astra, mundus,



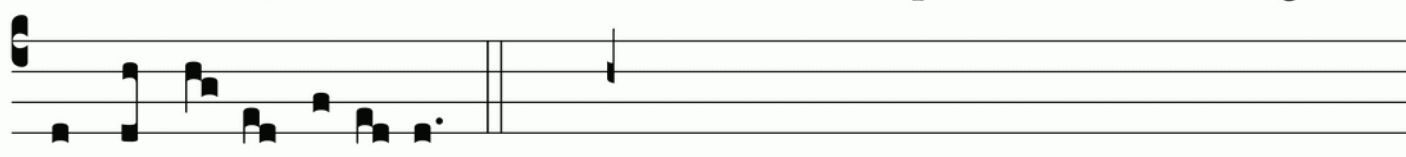
Quo la-vántur flúmi-ne! Crux fidelis.



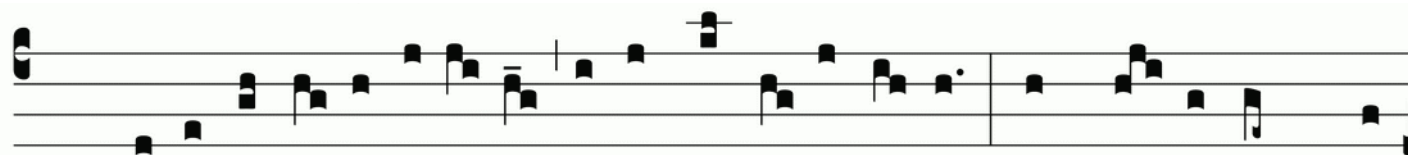
¶. 8. Flecte ramos, arbor al-ta, Tensa la-xa vísce-ra, Et ri-gor lentés-



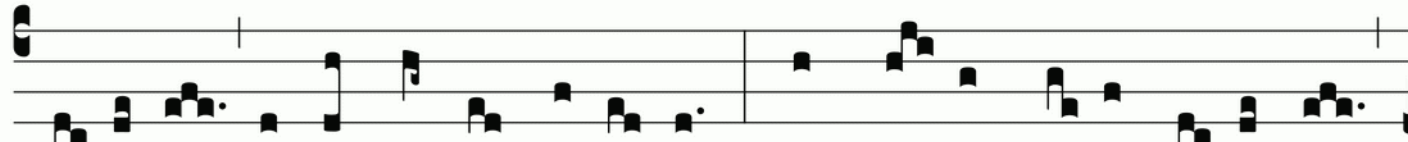
cat il-le, Quem de-dit na-tí-vi-tas: Et su-pérni membra Re-gis



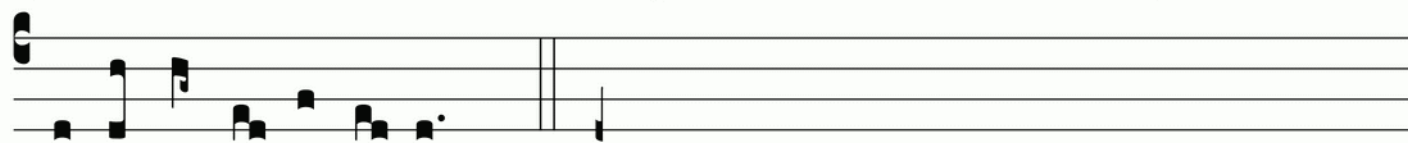
Tende mi-ti stí-pi-te. *Dulce



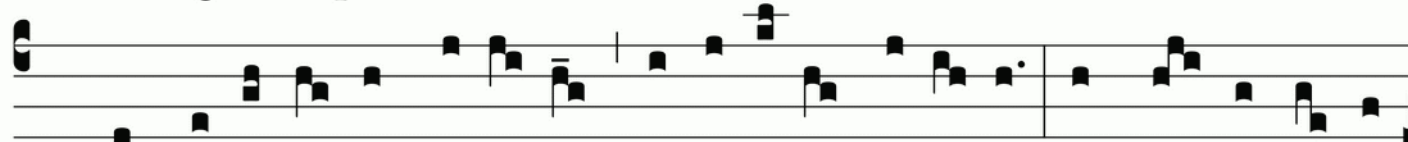
9. So-la digna tu fu-ís-ti Ferre mundi víc-timam: Atque portum præ-



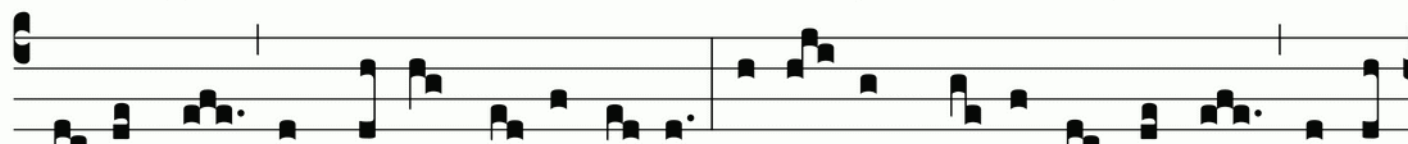
pa-rá-re Arca mundo náufra-go: Quam sa-cer cru-or per-únxit,



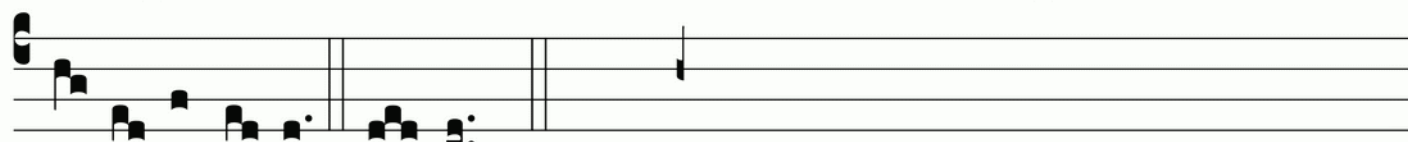
Fu-sus Agni córpo-re. Crux fidelis.



10. Sempí-terna sit be-á-tæ Tri-ni-tá-ti gló-ri-a: Æqua Pa-tri Fi-



li-óque; Par de-cus Pa-rá-cli-to: Uní-us Tri-níque nomen Laudet



u-ni-vér-si-tas. A-men. *Dulce

CruX fideLis

HYMN.
I
CruX fi-dé-lis, inter omnes Arbor u-na nó-bi-lis: Nulla sil-va
ta-lem pro-fert, Fronde, flo-re, gé-rmi-ne: * Dulce lignum, dulces cla-
vos, Dulce pondus sústi-net.

HYMN.
I
PAnge, lingua, glo-ri-ó-si Láure-am certámi-nis, Et su-per Cru-
cis trophé-o Dic tri-úm-phum nó-bi-lem: Quá-li-ter Red-émptor or-
bis Immo-lá-tus ví-ce-rit. CruX fideLis.

***Dulce**
De pa-réntis pro-toplás-ti Fraude Fac-
tor cóndo-lens, Quando pomi no-xi-á-lis In ne-cem morsu ru-it:
Ipse lignum tunc no-tá-vit, Damna ligni ut sólve-ret. ***Dulce**

***Dulce**
Hoc opus nostræ sa-lú-tis Ordo de-po-pósce-rat: Multi- fórmis
pro-di-tó-ris Ars ut artem fá-l-le-ret: Et me-dé-lam ferret inde,
Hostis unde læ-se-rat. CruX fideLis.

***Dulce**
Quando ve-nit ergo sa-crí Ple-ni-tú-do témpo-ris, Missus est ab
arce Patris Na-tus, orbis Cóndi-tor, Atque ventre virgi-ná-li Carne
amíc-tus pró-di-it. ***Dulce**

***Dulce**
Va-git infans inter arcta Cóndi-tus præ-sé-pi-a: Membra pannis
invo-lú-ta Virgo Ma-ter ál-li-gat: Et De-i ma-nus pe-dés-que
Stricta cingit fásci-a. CruX fideLis.

¶ 6. Lustra sex qui jam per-é- git, Tempus implens córpo-ris, Sponte lí-be-ra Red-émptor Passi-ó-ni dé-di-tus, Agnus in Cru-cis le-vá-tur Immo-lándus stí-pi-te. *Dulce

¶ 7. Felle po-tus ecce languet: Spi-na, cla-vi lance-a, Mi-te corpus per-fó-rá-runt, Unda ma-nat et cru-or: Terra, pontus, astra, mundus, Quo la-vántur flúmi-ne! Crux fidelis.

¶ 8. Flecte ramos, arbor al-ta, Tensa la-xa vísce-ra, Et ri-gor lentés-cat il-le, Quem de-dit na-tí-vi-tas: Et su-pérni membra Re-gis Tende mi-ti stí-pi-te. *Dulce

¶ 9. So-la digna tu fu-ís-ti Ferre mundi víc-timam: Atque portum præ-pa-rá-re Arca mundo náu-fra-go: Quam sa-cer cru-or per-únx-it, Fu-sus Agni córpo-re. Crux fidelis.

10. Sempí-térna sit be-á-tæ Tri-ni-tá-ti gló-ri-a: Æqua Pa-tri Fi-li-óque; Par-de-cus Pa-rá-clí-to: Uní-us Tri-ní-que nomen Laudet u-ni-vér-si-tas. A-men. *Dulce