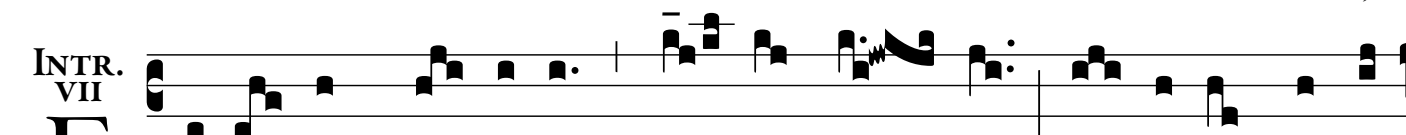


I POST EPIPHANIAM (SANCTÆ FAMILIÆ)

Prov 23: 24, 25

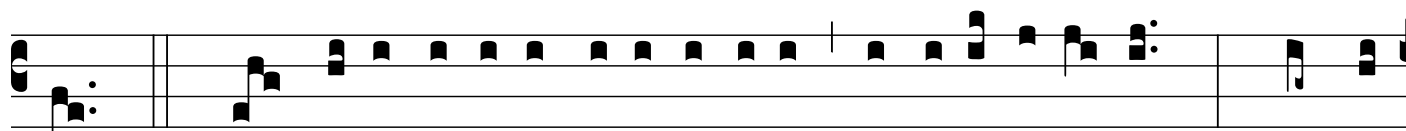
INTR.
VII



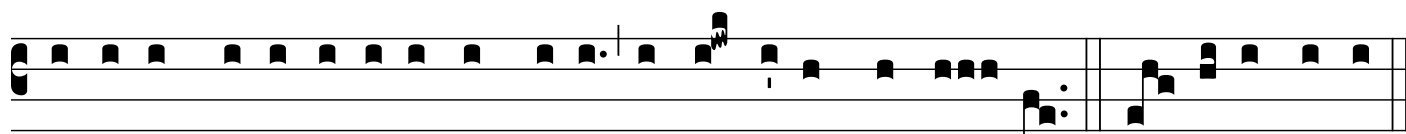
EXsul- tet gáu- di- o * pa- ter Jus- ti, gáu- de- at Pa- ter



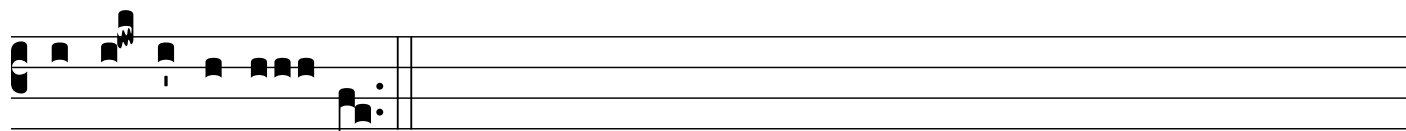
tu- us et Ma-ter tu- a, et ex-súl- tet quæ gé- nu- it



te. *Ps.* Quam di- lécta tabernácu- la tu- a, Dómine virtú- tum! * concu-



píscit et dé- fi- cit áni- ma me- a in á- tri- a Dómi- ni. Gló- ri- a Patri.



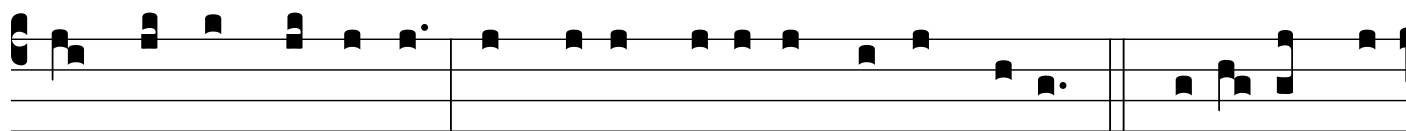
E u o u a e.

Ps 26: 4

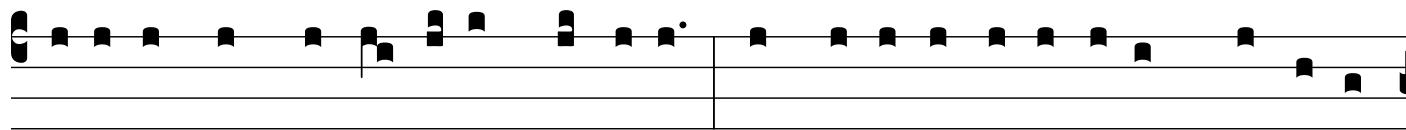
GRAD.
VIII



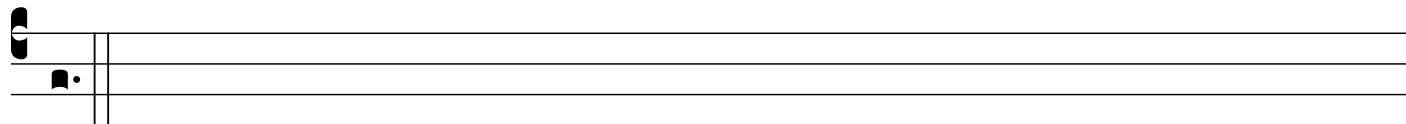
U-nam pé- ti- i a Dómino, hanc requí- ram: † ut inhábi- tem



in domo Dómi- ni * ómnibus di- ébus vi- tæ me- æ. 2. Be- á- ti qui



hábi- tant in domo tu- a, Dómine: * in sæcu- la sæcu- lórum laudábunt



te.

Isai 45: 15

