

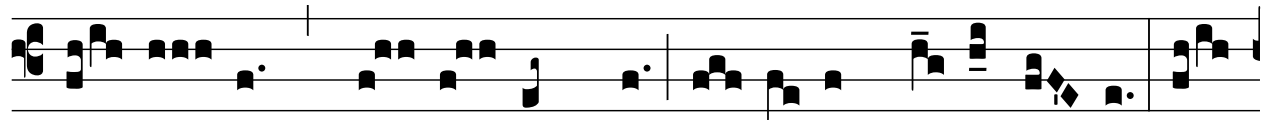
NATIVITAS DOMINI, MISSA AD MEDIA NOCTEM

INTROITUS

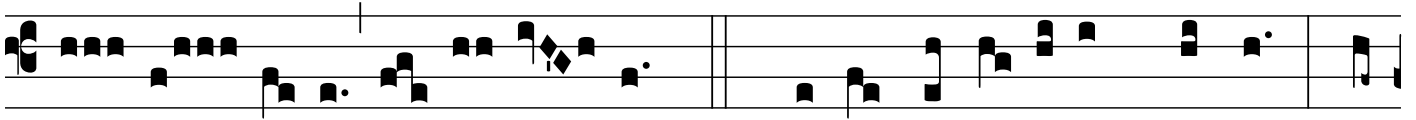
Ps 2: 7, 1

INTR.
II

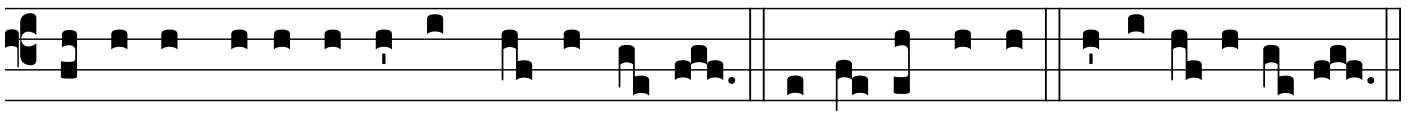
D



O-mi- nus * di- xit ad me: Fí- li- us me- us es tu, e-



go hó- di- e gé- nu- i te. *Ps.* Qua- re fremu- é- runt gentes: * et



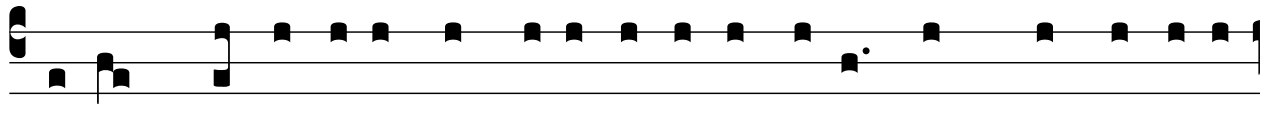
pópu- li medi- tá- ti sunt in- á- ni- a? Gló- ri- a Patri. E u o u a e.

GRADUALE

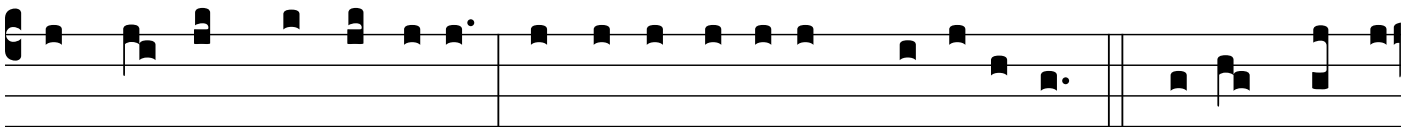
Ps 109: 3, 1

GRAD.
VIII

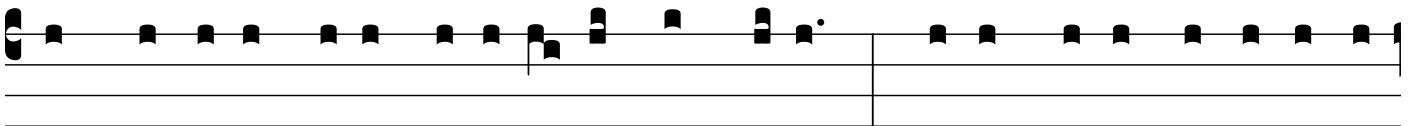
T



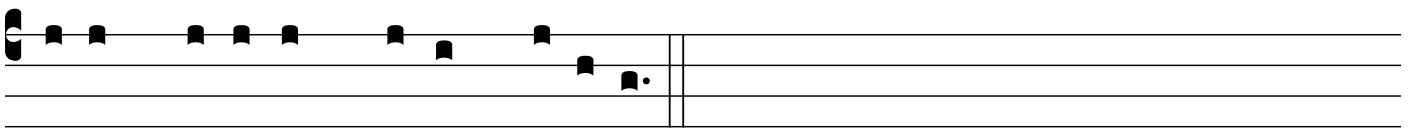
Ecum princí- pi- um in di- e virtú- tis tu- æ: † in splendó- ribus



sanctó- rum, ex ú- tero * ante lu- cí- ferum génu- i te. 2. Di- xit Dómi-



nus Dómino me- o: Sede a dextris me- is: * donec ponam in- imí- cos



tu- os scabéllum pedum tu- órum.

