

SEPTEMBER 29.

DEDICATION OF THE CHURCH OF ST. MICHAEL, THE ARCHANGEL.

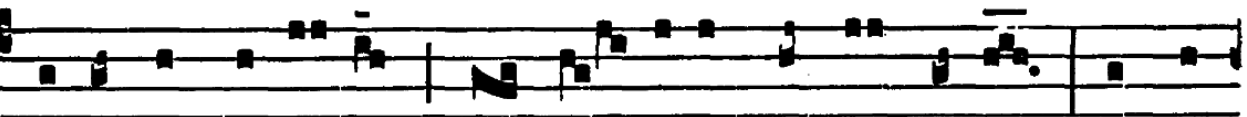
Double of the First Class.

Intr.

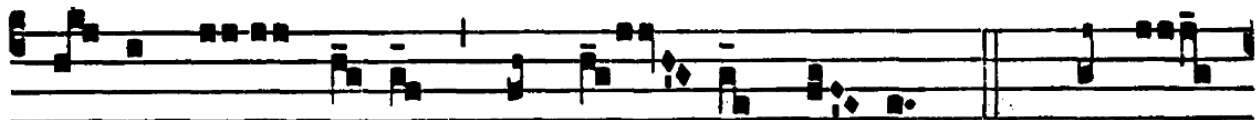
3.

B

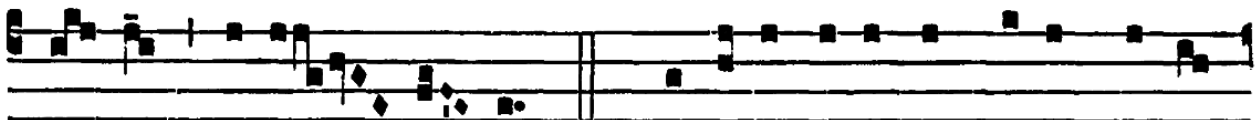
Enedí-ci-te Dóminum * ómnes Ange- li é-jus :



pot-éntes virtú- te, qui fá- ci-tis vérbum é-jus, ad au-



di- éndam vó-cem sermó- num é- jus. *P. T.* Alle-



lú- ia, alle- lú- ia. *Ps.* Bénedic ánima mé-a Dómi-



no : * et ómni- a quae intra me sunt, nómi-ni sáncto



é-jus. Gló-ri- a Pátri. E u o u a e.